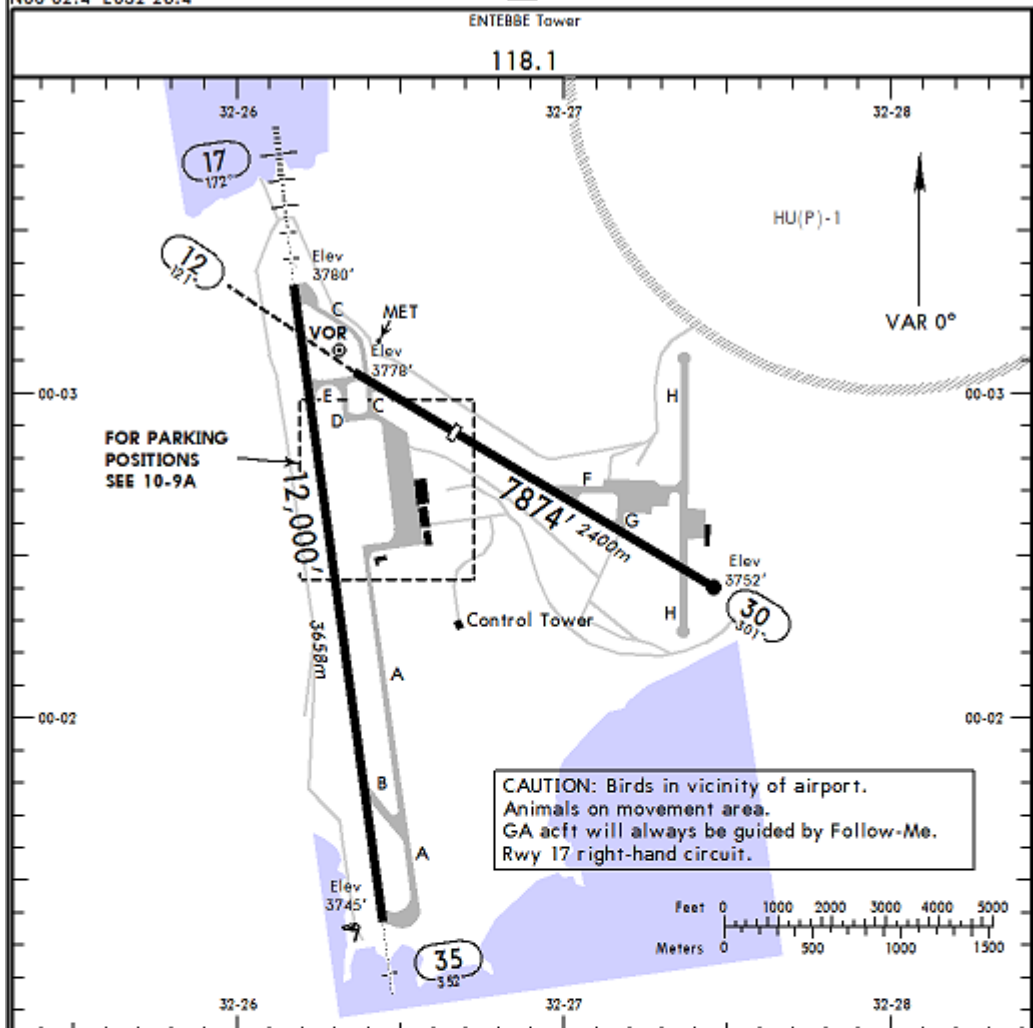


HUEN/EBB
 Apt Elev 3782'
 N00 02.4 E032 26.4

JEPPESEN
 19 AUG 11 10-9 Eff 25 Aug

ENTEBBE, UGANDA
 ENTEBBE INTL



ADDITIONAL RUNWAY INFORMATION

RWY		USABLE LENGTHS		TAKE-OFF	WIDTH
		Threshold	Landing Beyond Glide Slope		
12		5735' 1748m			148' 45m
17	HIRL MIALS PAPI-L (angle 3.0°)		10,967' 3343m		148' 45m
35	HIRL MIALS PAPI-L (angle 3.0°)				

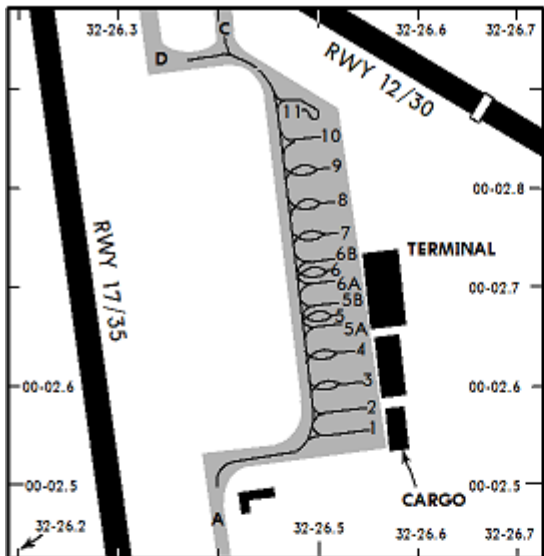
TAKE-OFF

AIR CARRIER (JAA)
 All Rwys

	LVP must be in force RCLM (DAY only) or RL	RCLM (DAY only) or RL
A		
B	250m	400m
C		
D	300m	

CHANGES: Communications. Notes.

© JEPPESEN, 2000, 2011. ALL RIGHTS RESERVED.



Departing acft shall obtain push-back clearance and taxi instruction from TWR.

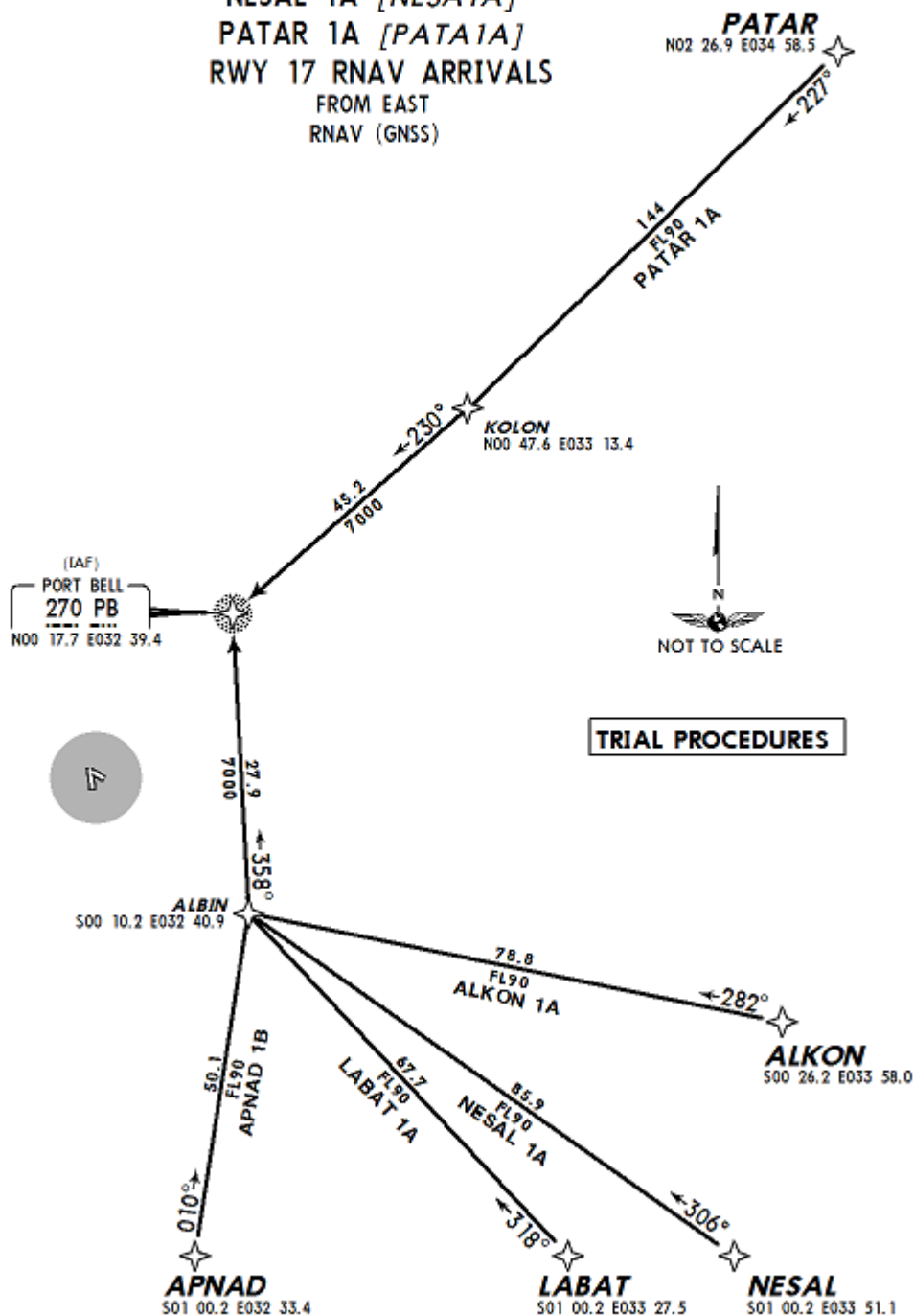
INS COORDINATES

STAND No.	COORDINATES
1 thru 4	N00 02.6 E032 26.6
5 thru 6B	N00 02.7 E032 26.5
7 thru 9	N00 02.8 E032 26.5
10, 11	N00 02.9 E032 26.5

Apt Elev 3782' Alt Set: MB
Trans level: FL80 Trans alt: 7000'



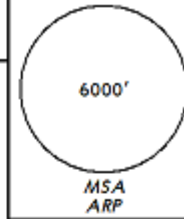
ALKON 1A [ALKO1A]
APNAD 1B [APNA1B]
LABAT 1A [LABA1A]
NESAL 1A [NESA1A]
PATAR 1A [PATA1A]
RWY 17 RNAV ARRIVALS
FROM EAST
RNAV (GNSS)



CHANGES: PATAR INS coordinates.

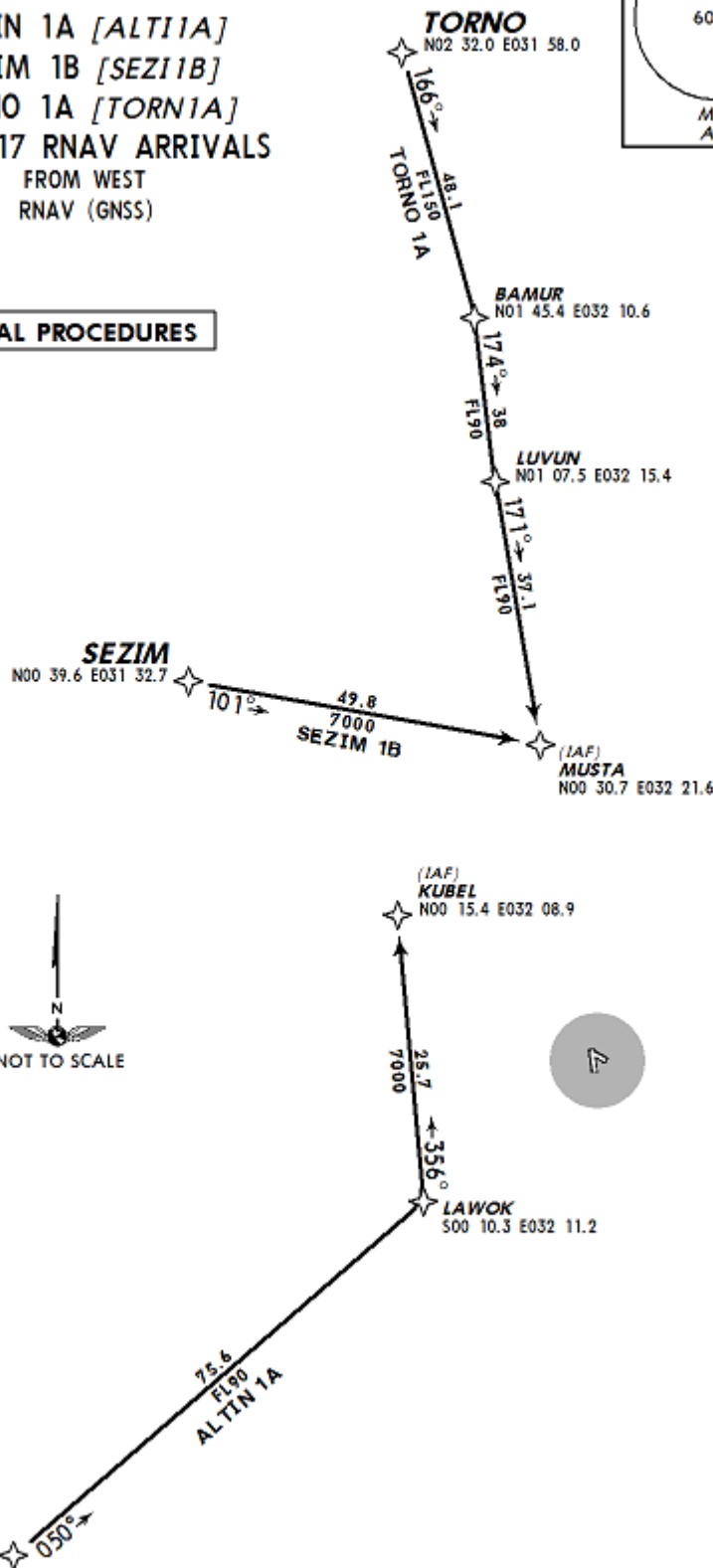
© JEPPESEN, 2007, 2009. ALL RIGHTS RESERVED.

Apt Elev 3782'
Alt Set: MB
Trans level: FL80 Trans alt: 7000'



ALTIN 1A [ALTI1A]
SEZIM 1B [SEZI1B]
TORNO 1A [TORN1A]
RWY 17 RNAV ARRIVALS
FROM WEST
RNAV (GNSS)

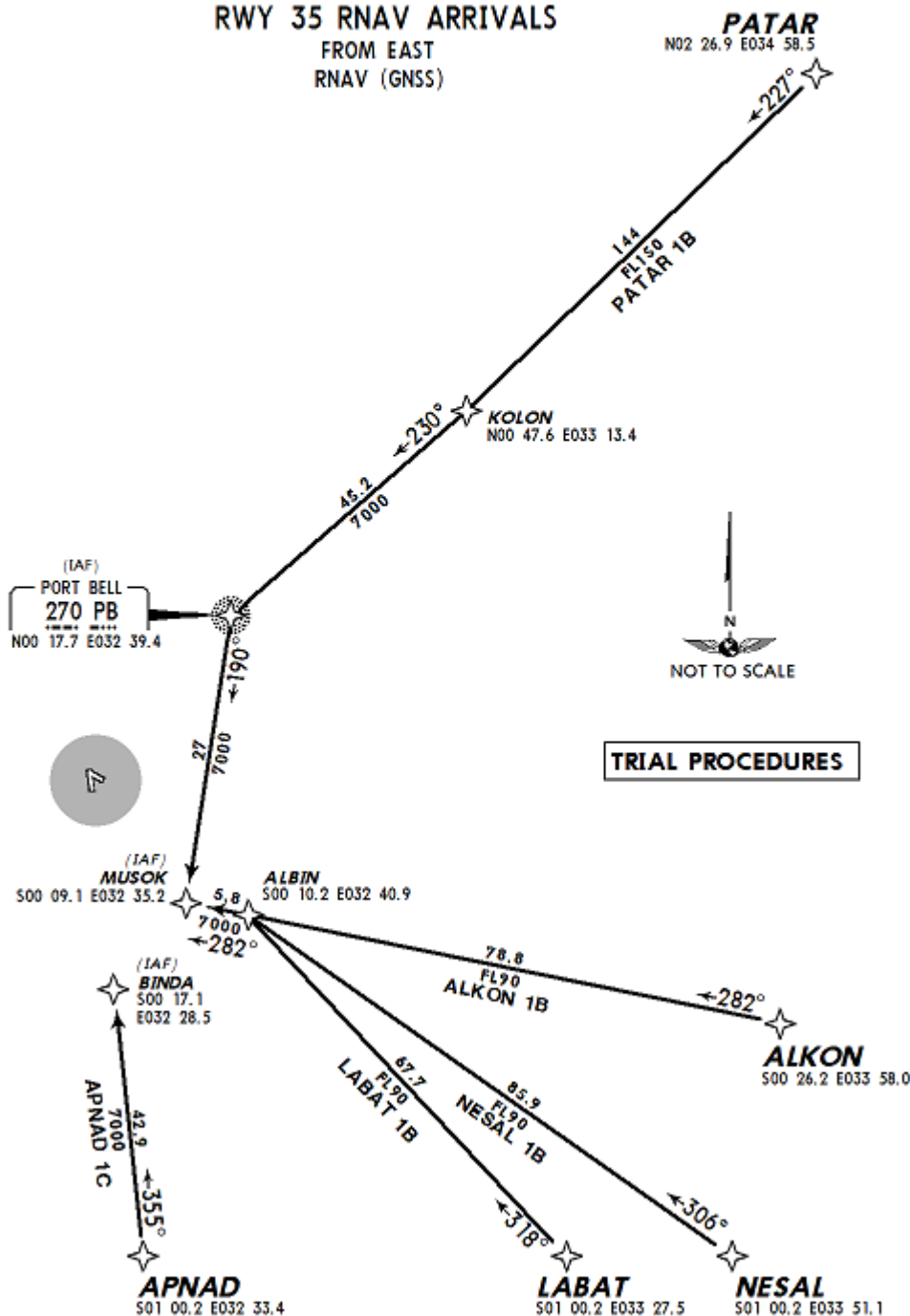
TRIAL PROCEDURES



Apt Elev 3782'
Alt Set: MB
Trans level: FL80 Trans alt: 7000'



ALKON 1B [ALKO1B]
APNAD 1C [APNA1C]
LABAT 1B [LABA1B]
NESAL 1B [NESA1B]
PATAR 1B [PATA1B]
RWY 35 RNAV ARRIVALS
FROM EAST
RNAV (GNSS)

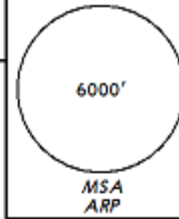


TRIAL PROCEDURES

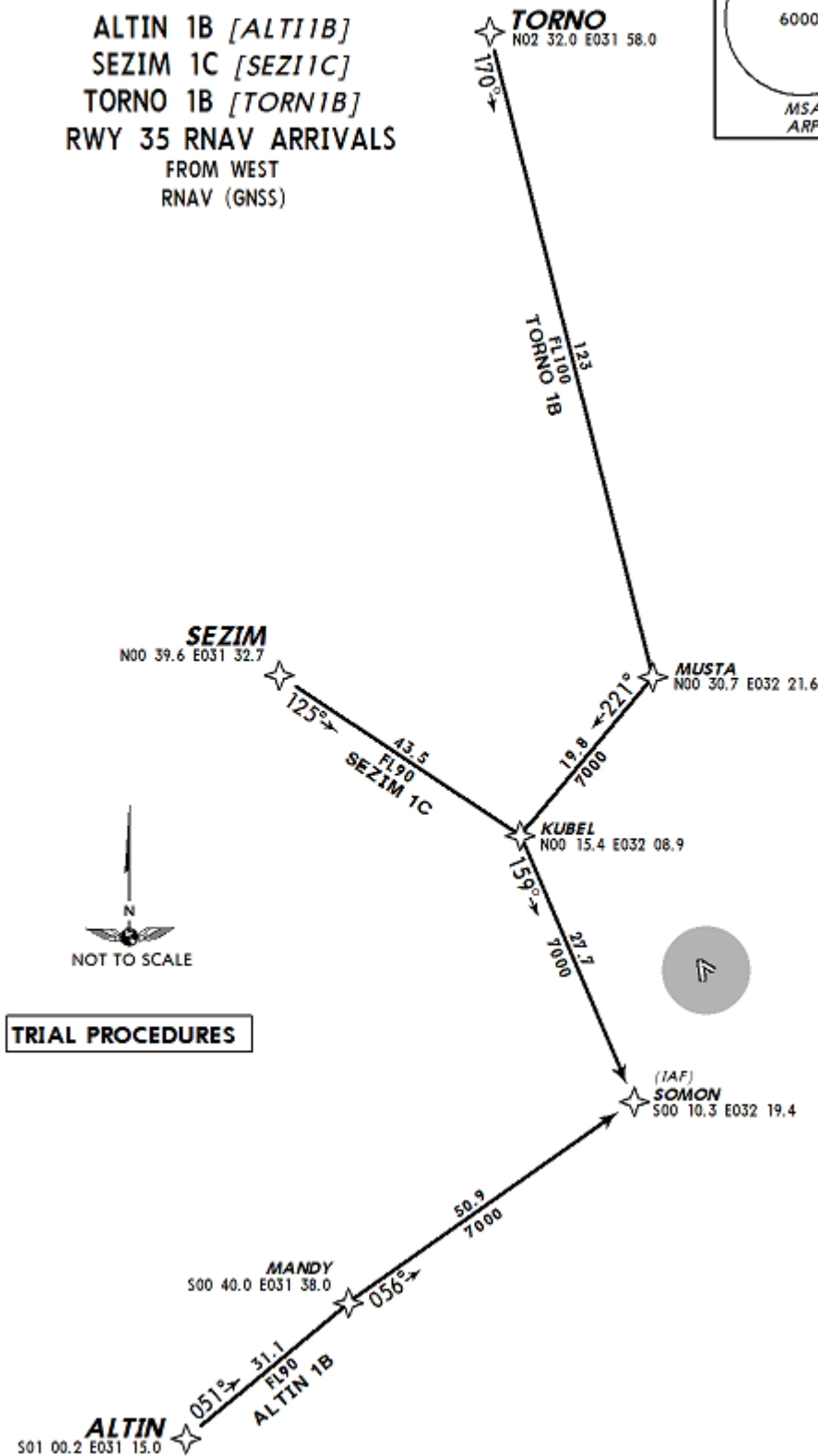
CHANGES: PATAR INS coordinates.

© JEPPESEN, 2007, 2009. ALL RIGHTS RESERVED.

Apt Elev 3782'
Alt Set: MB
Trans level: FL80 Trans alt: 7000'



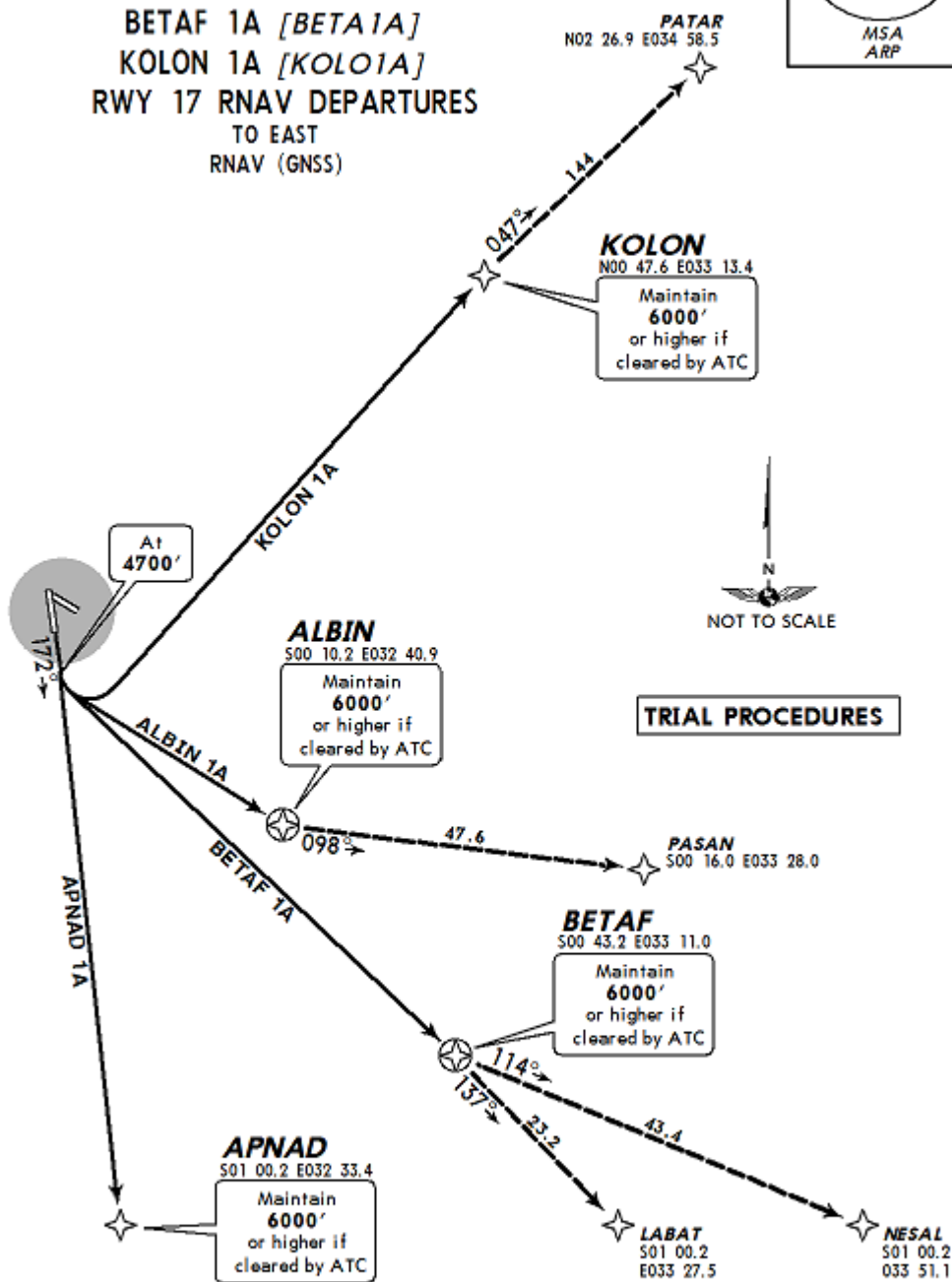
ALTIN 1B [ALTI1B]
SEZIM 1C [SEZI1C]
TORNO 1B [TORN1B]
RWY 35 RNAV ARRIVALS
FROM WEST
RNAV (GNSS)



Apt Elev 3782' Trans level: FL80 Trans alt: 7000'
SIDs include minimum noise routings.



ALBIN 1A [ALB11A]
APNAD 1A [APNA1A]
BETAF 1A [BETA1A]
KOLON 1A [KOLO1A]
RWY 17 RNAV DEPARTURES
TO EAST
RNAV (GNSS)



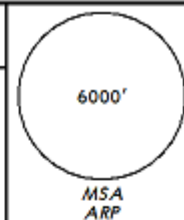
TRIAL PROCEDURES

SID	ROUTING
ALBIN 1A	Climb to 4700', turn LEFT to ALBIN. TRANSITION: From ALBIN to PASAN.
APNAD 1A	Climb to 4700', then to APNAD.
BETAF 1A	Climb to 4700', turn LEFT to BETAF. TRANSITION: From BETAF to LABAT or NESAL.
KOLON 1A	Climb to 4700', turn LEFT to KOLON. TRANSITION: From KOLON to PATAR.

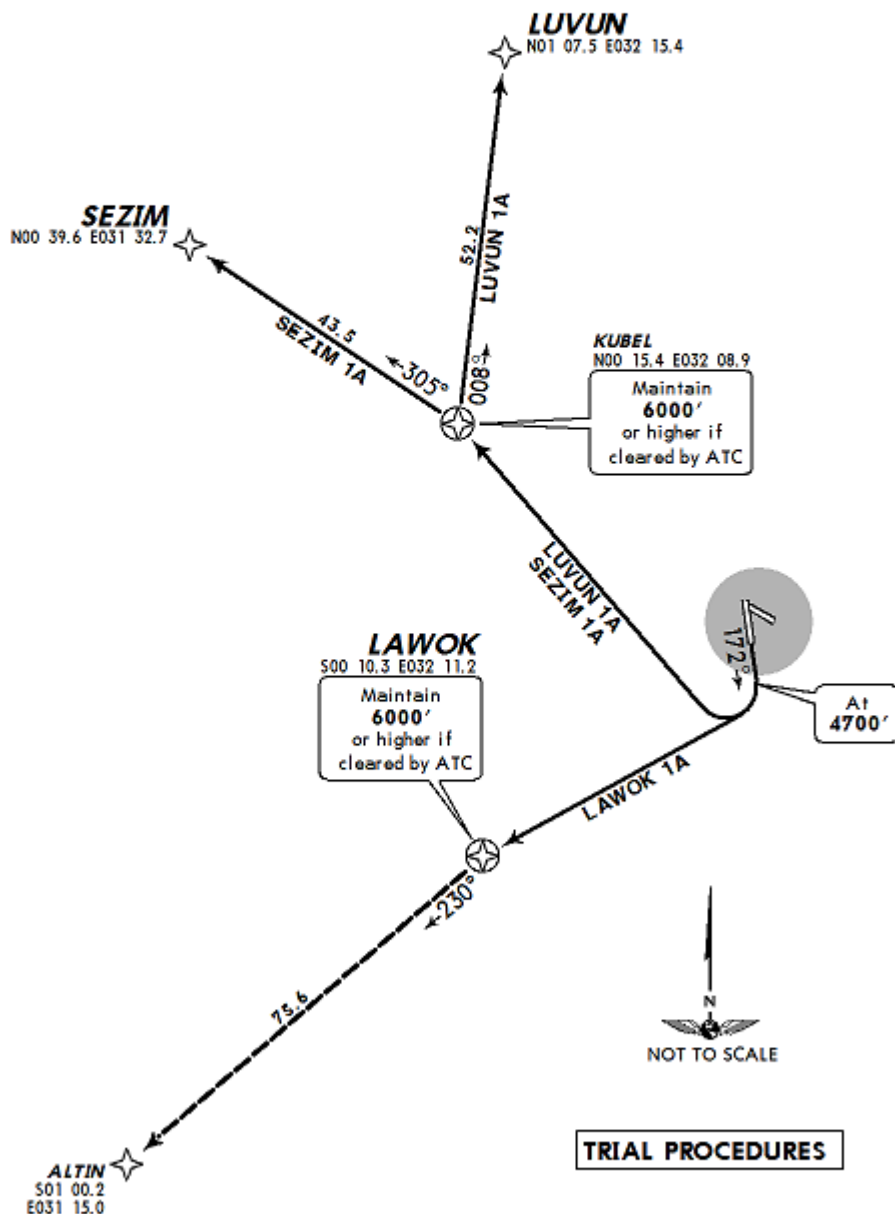
CHANGES: PATAR INS coordinates.

© JEPPESEN, 2007, 2009. ALL RIGHTS RESERVED.

Apt Elev 3782' Trans level: FL80 Trans alt: 7000'
SIDs include minimum noise routings.



LAWOK 1A [LAWO1A]
LUVUN 1A [LUVU1A]
SEZIM 1A [SEZI1A]
RWY 17 RNAV DEPARTURES
TO WEST
RNAV (GNSS)



SID	ROUTING
LAWOK 1A	Climb to 4700', turn RIGHT to LAWOK. TRANSITION: From LAWOK to ALTIN.
LUVUN 1A	Climb to 4700', turn RIGHT to KUBEL, turn RIGHT to LUVUN.
SEZIM 1A	Climb to 4700', turn RIGHT to KUBEL, turn LEFT to SEZIM.

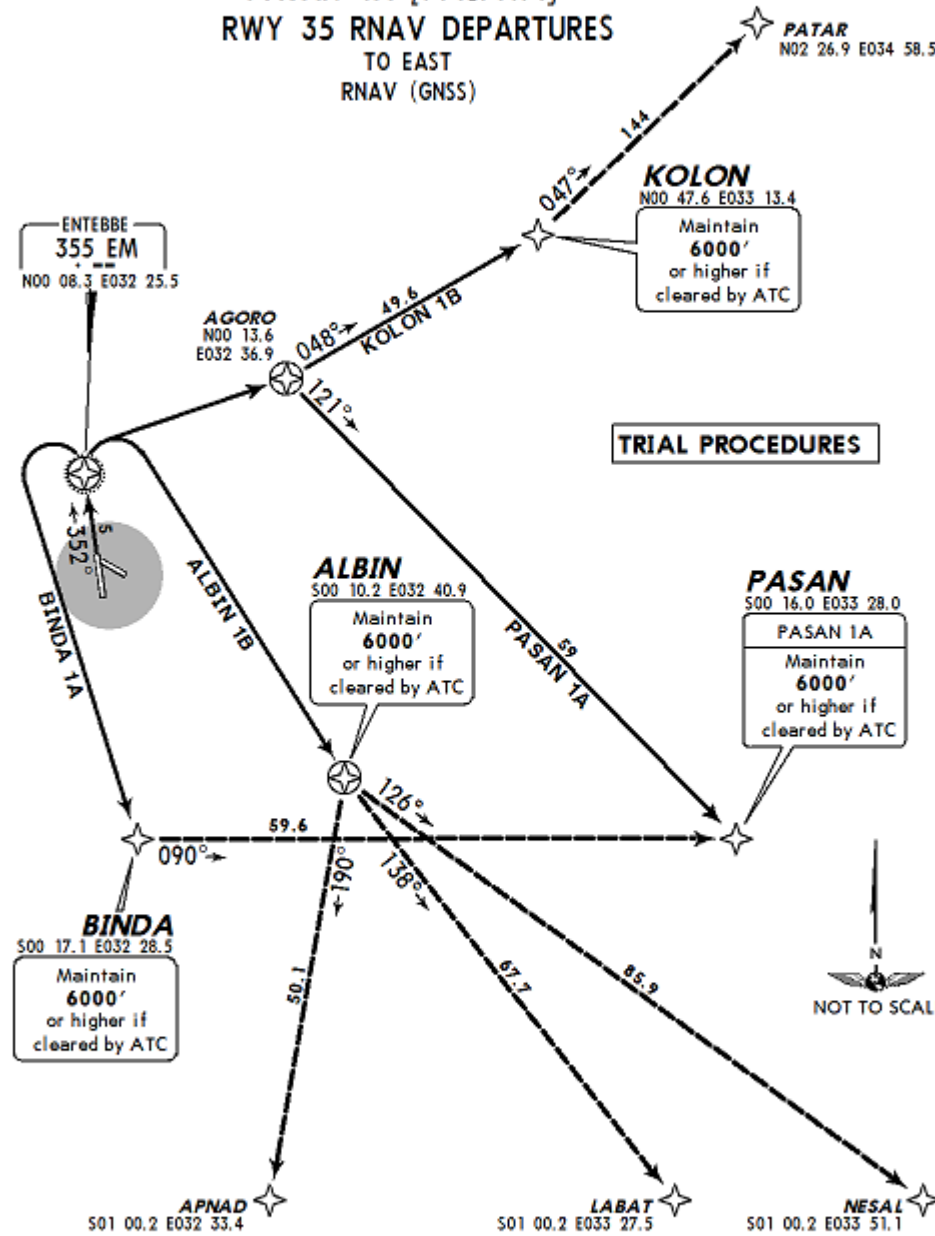
CHANGES: None.

© JEPPESEN, 2007. ALL RIGHTS RESERVED.

Apt Elev 3782' Trans level: FL80 Trans alt: 7000'
SIDs include minimum noise routings.



**ALBIN 1B [ALBI1B]
BINDA 1A [BIND1A]
KOLON 1B [KOLO1B]
PASAN 1A [PASA1A]
RWY 35 RNAV DEPARTURES
TO EAST
RNAV (GNSS)**



SID	ROUTING
ALBIN 1B	To EM, turn RIGHT to ALBIN. TRANSITION: From ALBIN to NESAL, LABAT or APNAD.
BINDA 1A	To EM, turn LEFT to BINDA. TRANSITION: From BINDA to PASAN.
KOLON 1B	To EM, turn RIGHT to AGORO, turn LEFT to KOLON. TRANSITION: From KOLON to PATAR.
PASAN 1A	To EM, turn RIGHT to AGORO, turn RIGHT to PASAN.

CHANGES: PATAR INS coordinates.

© JEPPESEN, 2007, 2009. ALL RIGHTS RESERVED.

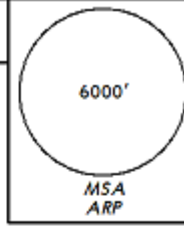
HUEN/EBB
ENTEBBE INTL

JEPPESEN
28 AUG 09 (10-3C)

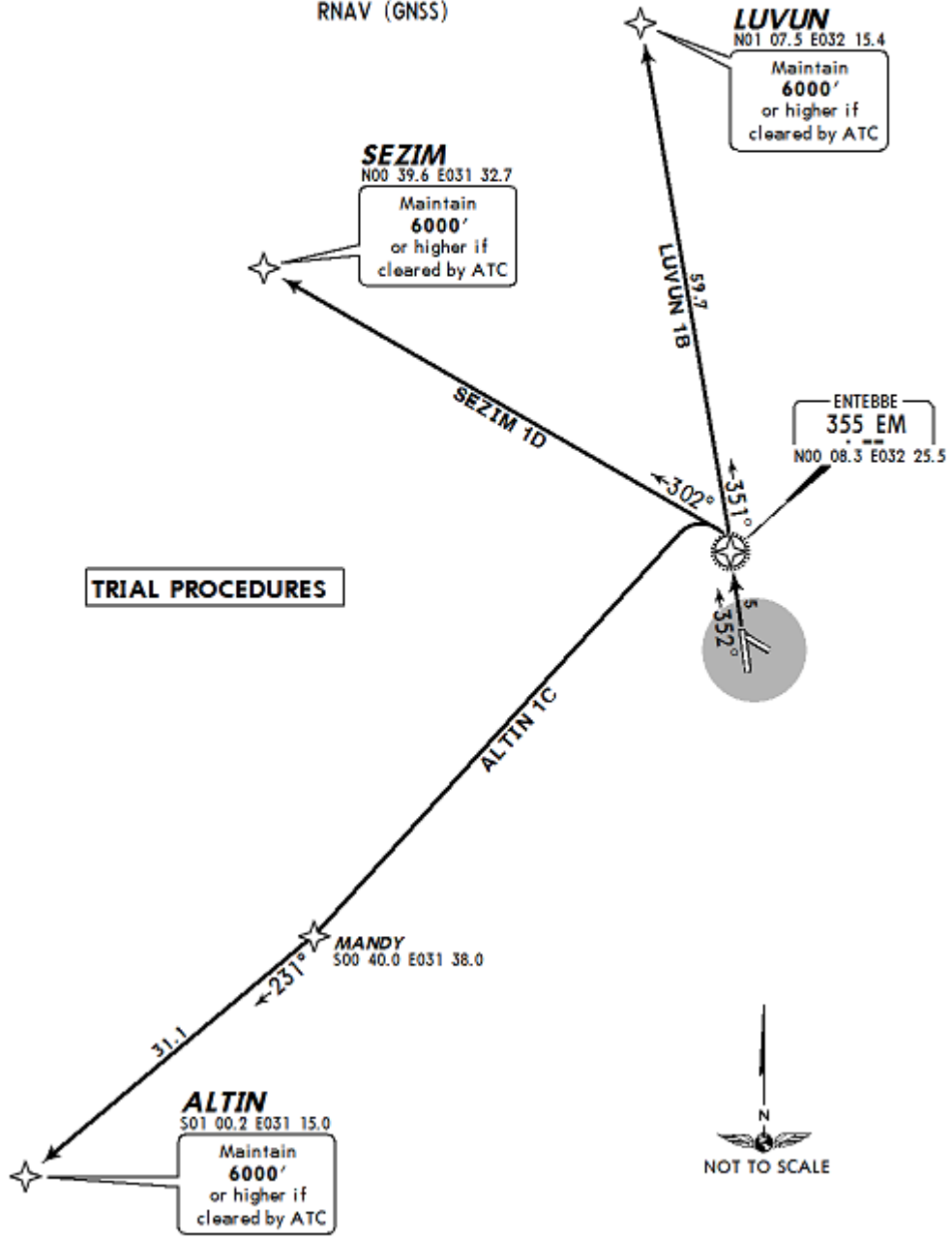
ENTEBBE, UGANDA
RNAV SID

Apt Elev
3782'

Trans level: FL80 Trans alt: 7000'
SIDs include minimum noise routings.



ALTIN 1C [ALTI1C]
LUVUN 1B [LUVU1B]
SEZIM 1D [SEZI1D]
RWY 35 RNAV DEPARTURES
TO WEST
RNAV (GNSS)



SID	ROUTING
ALTIN 1C	To EM, turn LEFT to MANDY, then to ALTIN.
LUVUN 1B	To EM, turn LEFT to LUVUN.
SEZIM 1D	To EM, turn LEFT to SEZIM.

CHANGES: None.

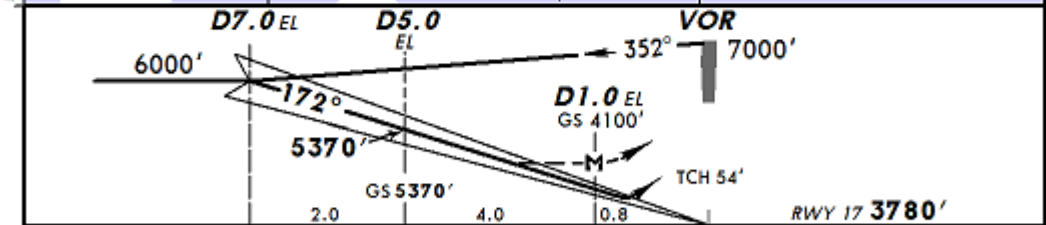
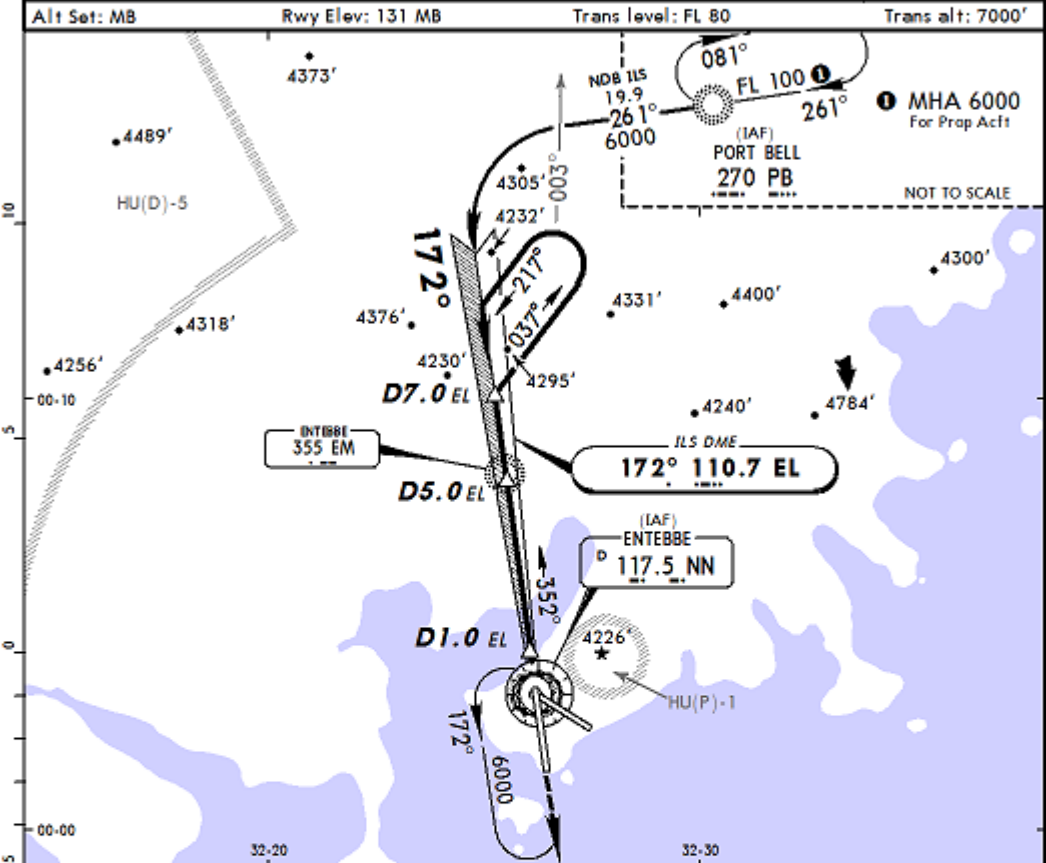
© JEPPESEN, 2007. ALL RIGHTS RESERVED.

HUEN/EBB
ENTEBBE INTL

JEPPESEN
19 AUG 11
Eff 25 Aug

ENTEBBE, UGANDA
VOR ILS or NDB ILS Rwy 17

ENTEBBE Approach (R) 126.6			ENTEBBE Tower 118.1		
LOC EL 110.7	Final Apch Crs 172°	GS D5.0 EL 5370' (1590')	ILS DA(H) Refer to Minimums	Apt Elev 3782' RWY 3780'	
MISSED APCH: Climb STRAIGHT AHEAD to 5500', then turn RIGHT and proceed to VOR at 6000'.					



Grnd speed-Kts	70	90	100	120	140	160	HIALS PAPI 5500' 6000' NN ↑ ↻ 117.5
ILS GS or LOC Descent angle 3.00°	377	484	538	646	753	861	
MAP at D1.0 EL							

STRAIGHT-IN LANDING RWY 17 ILS DA(H) AB: 4000' (220') CD: 4020' (240')				LOC (GS out) MDA(H) 4160' (380')		CIRCLE-TO-LAND Prohibited Northeast and East of rwy 17/35	
FULL		ALS out		ALS out		Max Kts	
						MDA(H)	
A						100	4370' (588') 1600m
B				800m	1600m	135	
C	800m	1200m				180	4480' (698') 3200m
D				1200m	2000m	205	4480' (698') 3600m

CHANGES: Approach frequency. © JEPPESEN, 2000, 2011. ALL RIGHTS RESERVED.

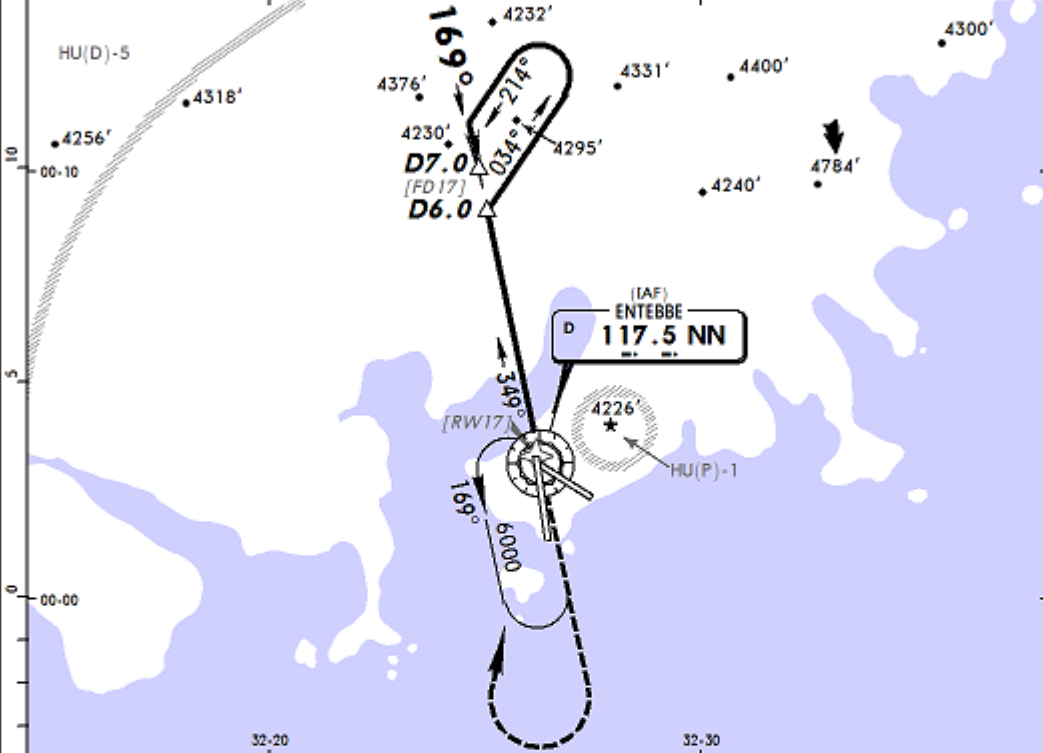
HUEN/EBB
ENTEBBE INTL

JEPPESEN
19 AUG 11 (13-1) Eff 25 Aug

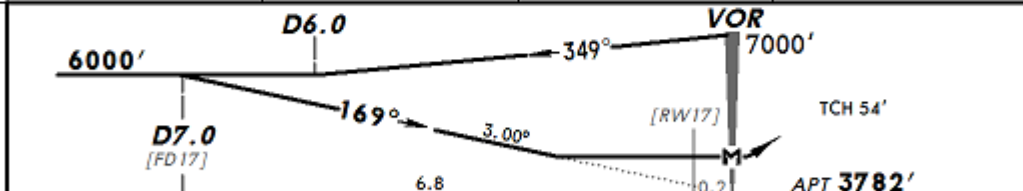
ENTEBBE, UGANDA
VOR DME Rwy 17

ENTEBBE Approach (R)			ENTEBBE Tower		
126.6			118.1		
VOR NN 117.5	Final Apch Crs 169°	Minimum Alt D7.0 6000' (2218')	MDA(H) Refer to Minimums	Apt Elev 3782'	
MISSED APCH: Climb STRAIGHT AHEAD to 5500', then turn RIGHT and proceed to VOR at 6000'.					MSA NN VOR

Alt Set: MB Apt Elev: 131 MB Trans level: FL 80 Trans alt: 7000'



NN DME	5.0	4.0	3.0
ALTITUDE	5300'	5000'	4700'



Grnd speed-Kts	70	90	100	120	140	160		HIALS	5500'	6000'	NN	
Descent angle	3.00°	372	478	531	637	743		849	PAPI	↑	↻ RT	117.5
MAP at VOR												

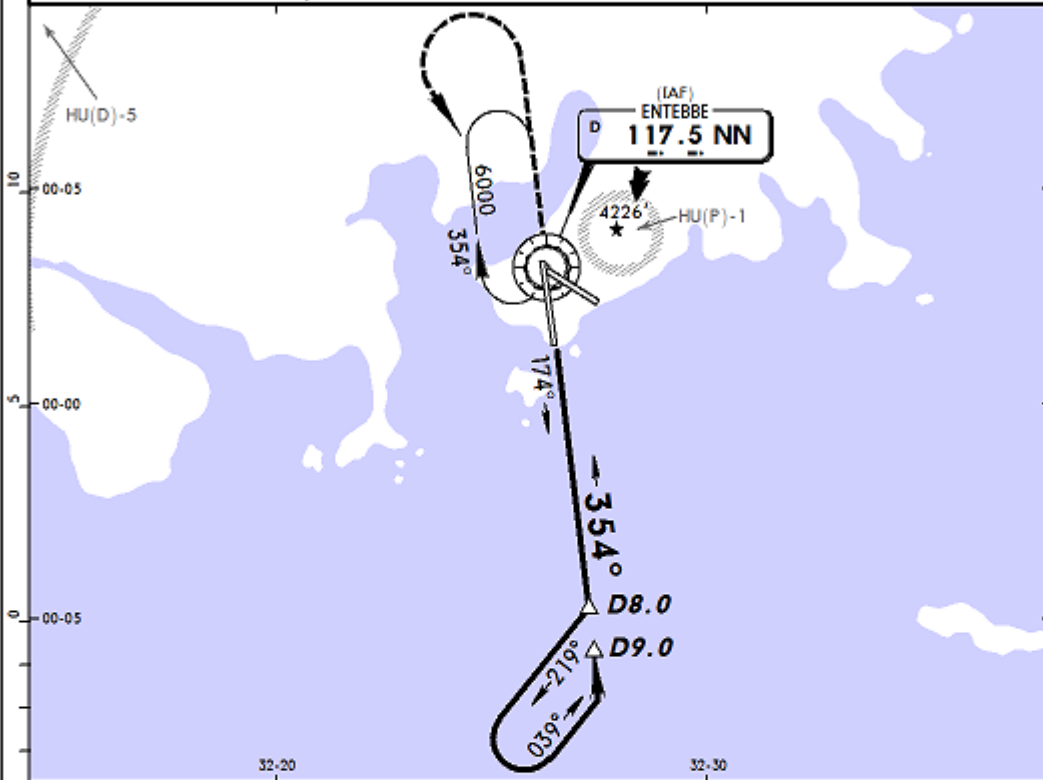
STRAIGHT-IN LANDING RWY 17				CIRCLE-TO-LAND			
MDA(H) AB: 4160' (378') CD: 4290' (508')				Prohibited Northeast and East of rwy 17/35			
ALS out				Max Kts			
A			800m	1600m	100	4370' (588') 1600m	
B			1600m	2400m	135	4480' (698') 3200m	
C			1600m	2400m	180	4480' (698') 3600m	
D			1600m	2400m	205	4480' (698') 3600m	

HUEN/EBB
ENTEBBE INTL

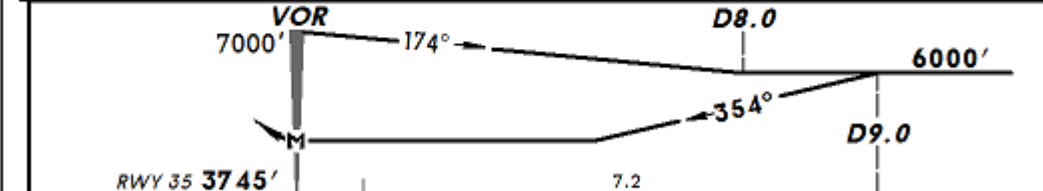
JEPPESEN
19 AUG 11 (13-2) Eff 25 Aug

ENTEBBE, UGANDA
VOR DME Rwy 35

ENTEBBE Approach (R) 126.6			ENTEBBE Tower 118.1		
VOR NN 117.5	Final Apch Crs 354°	Minimum Alt D9.0 6000' (2255')	MDA(H) 4290' (545')	Apt Elev 3782' RWY 3745'	
MISSED APCH: Climb STRAIGHT AHEAD to 6000', then turn LEFT and proceed to VOR at 6000'.					
Alt Set: MB	Rwy Elev: 130 MB	Trans level: FL 80	Trans alt: 7000'		



NIN DME	4.0	5.0	6.0
ALTITUDE	4470'	4770'	5070'



Grnd speed-Kts	70	90	100	120	140	160	MIALS PAPI 6000' NN 117.5 LT
Descent angle	2.86°	354	455	506	607	708	
MAP at VOR							

STRAIGHT-IN LANDING RWY 35			CIRCLE-TO-LAND Prohibited Northeast and East of rwy 17/35	
MDA(H) 4290' (545')			Max Kts	
A	1200m	ALS out	100	4370' (588')
B		1600m	135	1600m
C	2400m		180	4480' (698')
D	2800m		205	3200m
				4480' (698')
				3600m